



Customer ...
City/State ...
Department ...
Equipment ...: HTC1100

Lab Number ...: 1203-01099

Date ...: 03/21/2012

System ...: LUBE - 10 GALLONS

Oil Type ...

Dilution ...: 10:1

Code ...: R

Salesman ...

Operating Data ...: BLISS, SE2-300-84X84, LUBE - 10 GALLONS

Comments ...: THE WEAR SITUATION IS MARGINAL. A MODERATE AMOUNT OF NORMAL WEAR WAS FOUND WITH SEVERAL

**CONSIDERED JUDGEMENT
OF WEAR SITUATION**

LOW	_____
NORMAL	_____
MARGINAL	_____ X _____
CAUTION	_____
VERY HIGH	_____
(EXTREME ALERT)	_____

**DR FERROGRAPHY
READINGS**

L	1910.0
S	640.0
WPC	2550.0
L/S	3.0
L-S	1270.0

All observations are based on this being a representative sample of oil, using a clean, uncontaminated bottle.

TYPES OF PARTICLES	1	2	3	4	5	6	7	COMMENTS
Rubbing Wear (normal).....:								
Severe Wear (Rolling ./ Sliding ./ Combined)....:								
Red Oxides								
Dark Oxides								
Abrasive Wear (cutting) - Small (<30um long)..:								
Abrasive Wear (cutting) - Large (30um long) ...:								
FATIGUE								
Spheres - Small (<10um in diameter).....:								
Spheres - Large (10um in diameter).....:								
Chunks								
Reworked Particles (.laminar).....:								
NON-FERROUS PARTICLES								
White Nonferrous Metal.....:								
Copper Alloy								
Molybdenum Disulfide.....:								
CONTAMINANTS & DEGRADATION PRODUCTS								
Corrosive Wear								
Friction Polymer								
Fibers								
Nonmetallic Crystalline.....:								
Nonmetallic Amorphous Material.....:								
Other								

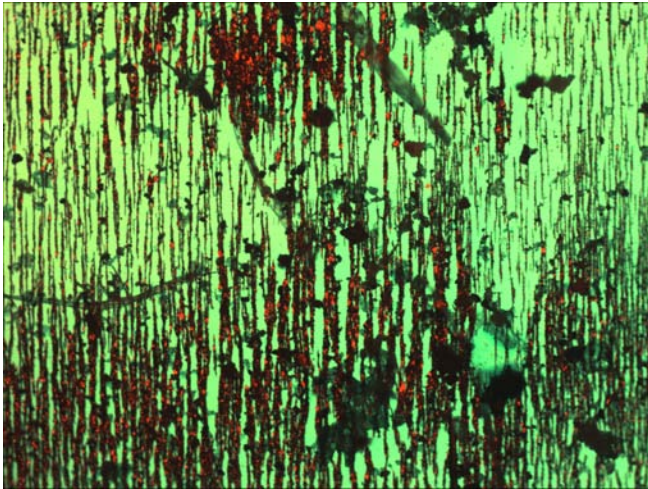
1: Very Few 2: Few 3: Few - Mod. 4: Moderate 5: Mod. - Heavy 6: Heavy 7: Very Heavy

FERROGRAM ANALYSIS

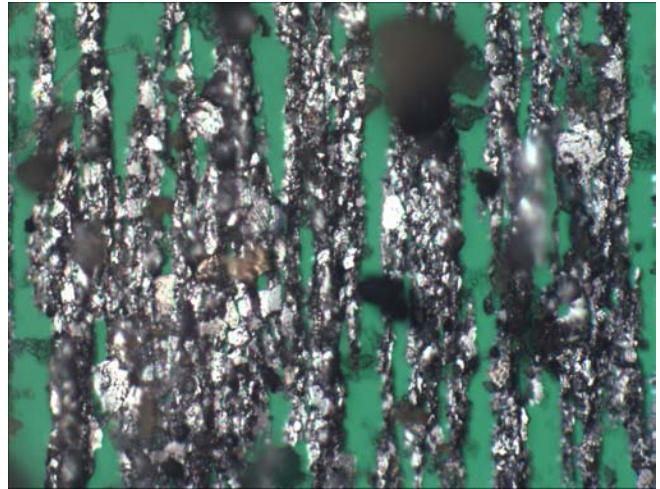
FROM ENGINEERED LUBRICANTS COMPANY

Customer:
City, State:
Sample ID:
Equipment: HTC1100
Make, Model: BLISS, SE2-300-84X48
System: LUBE - 10 GALLONS

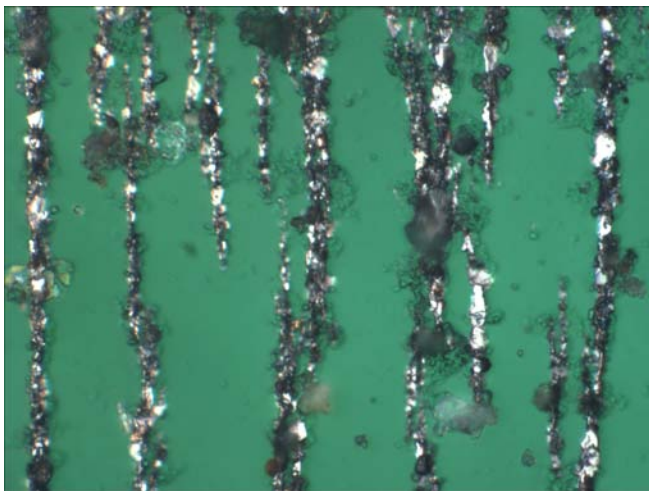
Date: 04-03-2012
Lab Number: 1203-01099
Dilution: 10:1



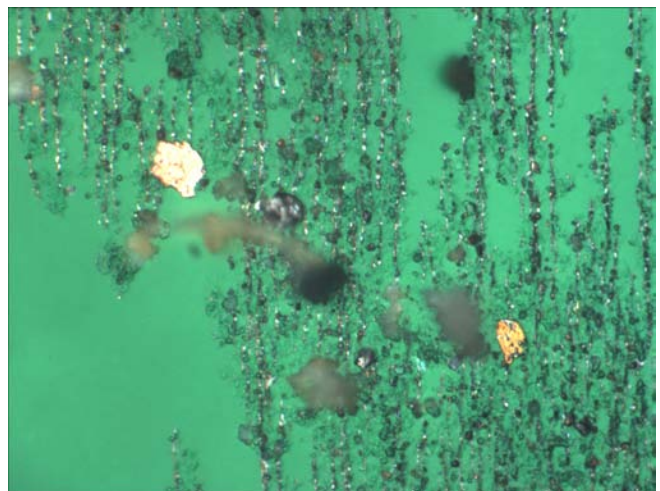
100x ENTRY



500x NORMAL WEAR, SEVERE WEAR
DARK OXIDES, CRYSTALS



500x NORMAL WEAR, CRYSTALS
DARK OXIDES



1000x NORMAL WEAR, COPPER ALLOY
CRYSTALS, AMORPHOUS MATERIAL



11525 ROCK ISLAND COURT
MARYLAND HEIGHTS, MO 63043-3597
314-872-9540